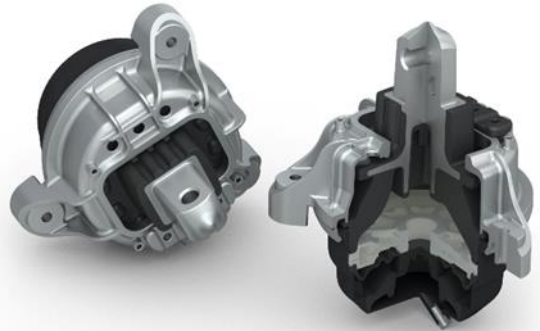


# ENGINE MOUNTS

## New fittable engine mounts for premium car brands

Car manufacturers increasingly install hydraulic or switchable engine mounts, as they combine the acoustic isolation function of conventional rubber engine mounts with a balanced dampening performance.

Corteco has increased its range of hydraulic and switchable engine mounts for different high performance engines for **Mercedes, Volvo, VAG and Porsche.**



### Selection of engine mounts new in range 07/2017:

Manufacturer	Model	Description	Corteco No	OE No
Mercedes	C-Class (W205)	Engine mount	<b>49387359</b>	2052405700
Volvo	S60 II, S80 II, V60, XC60	Engine mount	<b>49387373</b>	31401239
			<b>49387375</b>	9487476
VAG	A4 (B9)	Switchable engine mount	<b>49387382</b>	8W0199371BF
VAG	Q7 (4M)	Switchable engine mount	<b>49387385</b>	8W0199371AB
			<b>49387387</b>	8W0199372G
Porsche	Cayenne (92A)	Hydraulic engine mount	<b>49387389</b>	948.375.049.03
			<b>49387391</b>	948.375.050.03
VAG	Golf VII, A3 (8VA, 8VF)	Hydraulic engine mount	<b>49387394</b>	5Q0199262S
VAG	Golf VII, A3 ( 8VA, 8VF ), Leon (5F1), Octavia (5E3)	Hydraulic engine mount	<b>49387396</b>	5Q0199262BF
			<b>49387398</b>	5Q0199262BD