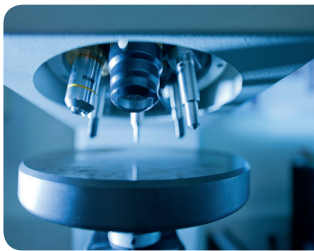


CORTECO

CHAIN OF EXCELLENCE

Corteco is one of the leading suppliers for the Independent Automotive Aftermarket. As a member of the global Freudenberg Group we supply over 26,000 products in OEM quality. With Corteco the Independent Automotive Aftermarket benefits from a product range of Sealing Solutions, Vibration Control and Cabin Air Filtration from an OE Manufacturer.



Specific product design to fulfill OE requirements



High quality raw materials for high-level service parts

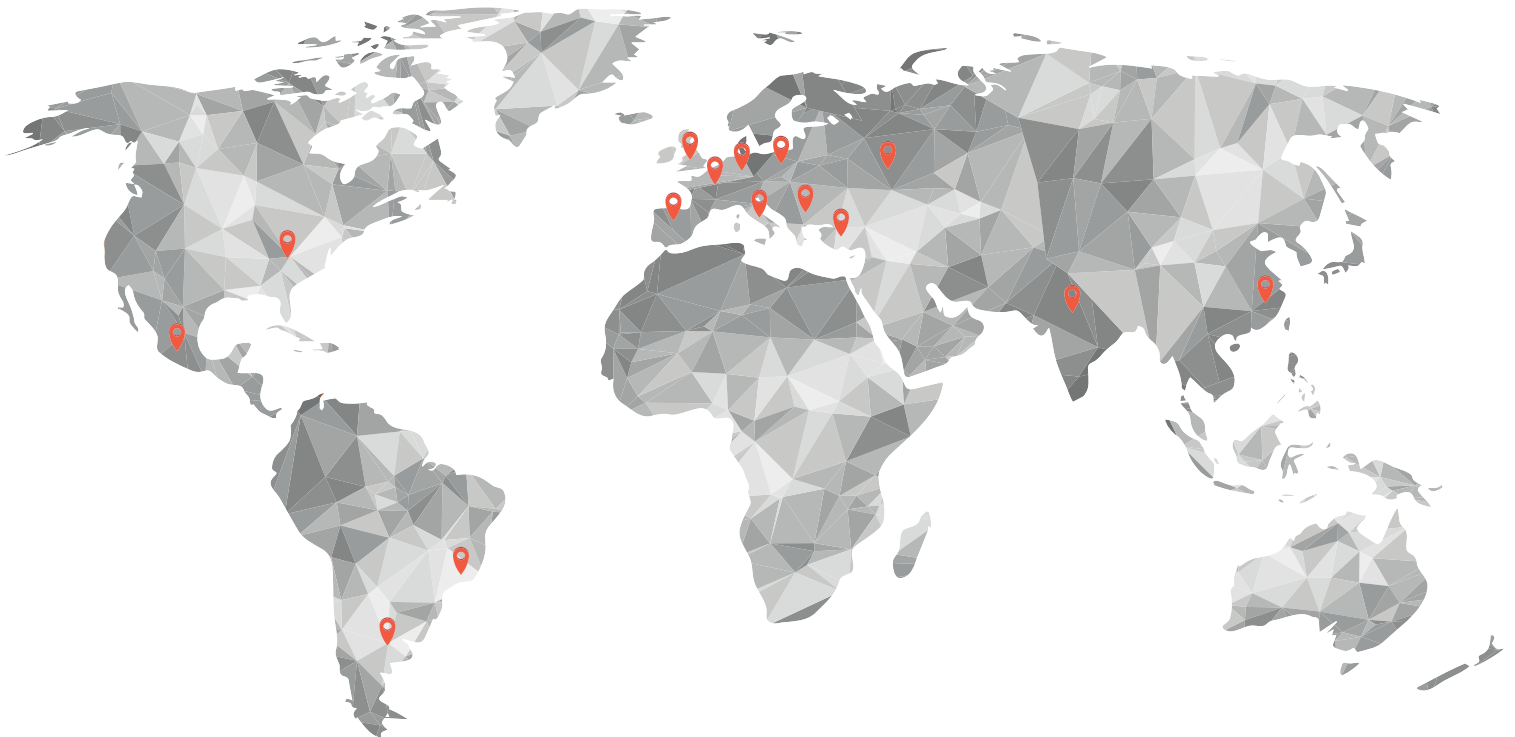


Efficient production processes



Global supply chain, dedicated to the aftermarket

15 WORLDWIDE LOCATIONS



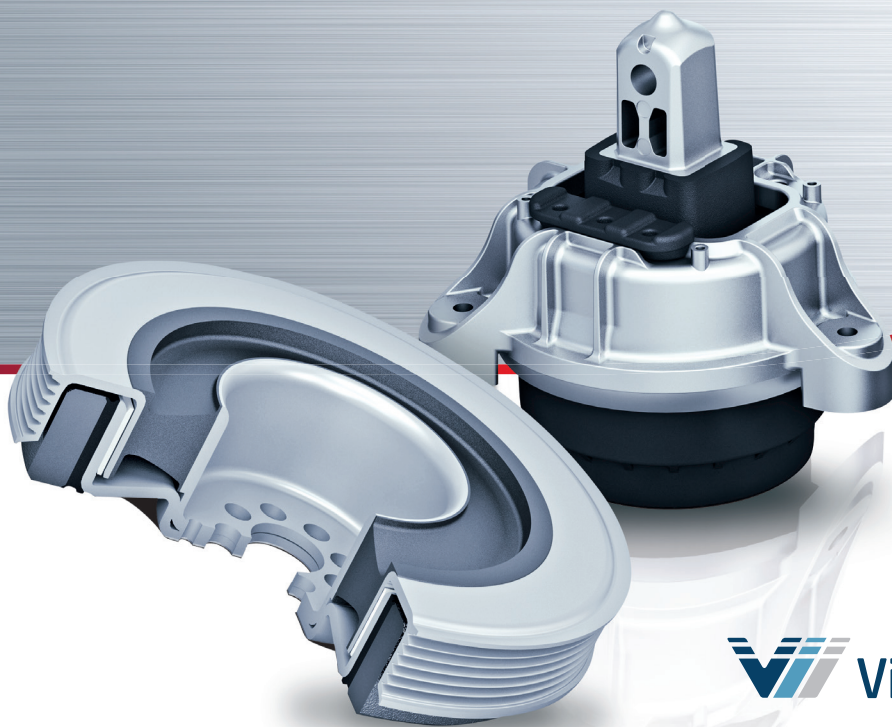
SEALING

VIBRATION
CONTROL

CABIN
AIR FILTER

OUR PERSONAL DRIVE. YOUR DRIVING COMFORT.

VIBRATION CONTROL
COMPONENTS IN OEM QUALITY.



 **Vibracoustic**

a brand of
 **FREUDENBERG**

 **CORTECO**[®]

YOUR EXPERT IN VIBRATION CONTROL

Vibracoustic is the global market leader in the field of automotive vibration control technology and supplies virtually every passenger vehicle and commercial vehicle manufacturer with components that clearly and noticeably boost the comfort on board. The global R&D network enables the engineers at Vibracoustic to develop unparalleled vibration damping technologies, gain new insights every day into manufacturing and materials engineering that are the key to superior products.

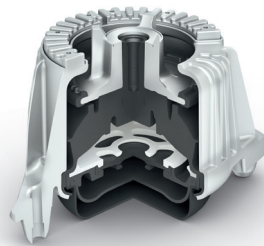
CRANKSHAFT PULLEYS



Crankshaft pulleys control the vibrations within the crankshaft. If they are not controlled the crankshaft might break at certain operating speeds.

- ▶ Damper pulleys
- ▶ Decoupled damper pulleys
- ▶ Damper pulley and bolt kits

ENGINE AND GEARBOX MOUNTS



Each rubber mixture has special damping properties and needs to be matched precisely to the specific application. Corteco offers original quality with the highest performance, fitting accuracy and safety.

- ▶ Hydro mounts
- ▶ Switchable engine mounts
- ▶ Lightweight mounts



SUSPENSION STRUT MOUNTS

The suspension strut mounts isolate the dynamic forces of the suspension strut and the spring thus avoiding the transfer of vibration to the vehicle body.

- ▶ Strut mounts including ball bearings



Start-stop systems are increasingly being implemented to reduce CO₂ emissions and save fuel. Starting and stopping the engine however causes severe, noise-generating vibrations which must be reduced or surrounding parts may be affected. Corteco provides an extensive range of pulleys and engine mounts especially developed for implementation in start-stop systems. The support of the parent group Freudenberg secures Corteco's first-to-market approach.



A COMPLETE RANGE OF STEERING AND SUSPENSION COMPONENTS

Corteco reinforces its vibration control offer of powertrain and chassis components with a complete Steering & Suspension range that covers over 90 % of all European vehicles. The range consists of over 7,000 articles including more than 3,000 repair kits and combines the expertise and quality of the leading Original Equipment Manufacturers from the Freudenberg Group.



TRACK CONTROL ARMS

Track control arms connect the vehicle chassis and the suspension module that carries the wheel.

Advantages:

- ▶ Ensure quick and precise movement of the wheels
- ▶ Ensure comfort due to vibration damping
- ▶ Lightweight mounts



CHASSIS AND DRIVE TRAIN MOUNTS

Also components such as chassis mounts and bushings play a decisive role when it comes to driving safety and comfort.

- ▶ Stabilizer mounts
- ▶ Drive train mounts
- ▶ Chassis and axle mounts
- ▶ Hydraulic accumulators



STABILIZER LINKS

The stabilizer link controls the body roll of the vehicle during turns by connecting the anti-roll bar and the suspension system of the vehicle.

Advantages:

- ▶ Minimizes noise transmissions
- ▶ Enables safe and comfortable driving



BALL JOINTS

The ball joint is an indispensable component used in tie rods, control arms and stabilizer links.



TIE ROD ENDS / TIE RODS

The fixed and adjustable tie rods are the connection between the steering box and the steering wheels of the vehicle.

Advantages:

- ▶ Adjustable to the needs of each individual chassis
- ▶ Ensure accurate steering and safe drivability
- ▶ Reduction of vibration of the steering wheel
- ▶ Reduction in tyre wear

